

## **John William Smith   Rosina Ing**

John William Smith and Rosina Ing were married on 15<sup>th</sup> March 1869. Details from the certificate are:

Parish of St. Mary, Lambeth, Surrey. 15 Mar 1869 No. 392

Husband: John William Smith, bachelor, engineer, St. Ann's Road,  
(father Thomas Smith (deceased), engineer)

Wife: Rosina Ing, spinster, St. Ann's Road, (father James Ing, builder).

Witnesses: Ed. Powell, Ann Miles.

The banns had been posted on 14 Feb at St. Mary's, Lambeth. Simply they stated:  
John William Smith, bachelor & Rosina Ing, spinster.

1871 census: 10 Walnut Tree Walk, Lambeth

John W Smith, head, married, 30, modeller mechanical,	Poplar E.
Rosina Smith, wife, married, 25,	Long Crendon, Bucks.
This in a house with 11 people in four households.	

A daughter, Maud Charlotte Smith was born in the March quarter of 1874 Lambeth 1d 433.

In 1877 a son, Charles Albert was born details being:

Lambeth District, sub district Lambeth Church 2<sup>nd</sup>, Surrey No. 462. 16 June 1877,  
10 Walnut Tree Walk.

Child: Charles Albert, boy, father John William Smith, modeller and machinist, mother Rosina Smith, formerly Ing, Informant John William Smith, father, 10 Walnut Tree Walk, Kennington Road, Lambeth.

1878 Rosina died approximately a year later in the Apr-June quarter age 32 Lambeth vol 1d page 260a.

In the 1881 census at 10 Walnut Tree Walk we find:

John W Smith	head	mar m	40	Mechanical Modeller	Limehouse Middlesex
Ann Smith	mother	wid f	64	Teacher (of music)	St George in the East
Maud C Smith	dau	unm f	7	Scholar	Lambeth
Sarah Chatrion	cousin	mar f	30	sewing machinist	Kennington, Kent

Charles is missing but we find a Charles Smith age 3 described as a 'nurse child' in a lodging house at 14 Royal Road, Newington, which is less than a mile away from Walnut Tree Walk. (Details of census at end).

A nurse child was a child who had been informally adopted, often when a mother had died and the father couldn't cope.

Ten years later the 1891 census shows now at 12 Royal Road, Newington, St Saviour Southwark, London & Surrey, a family of 9, a visitor and

Charles Smith, Boarder, male, 15, Warehouse, born London, Middlesex. The age is wrong but he probably lied about his age to get a job.

In 1899 Charles Albert Smith, a warehouseman married Edith Elizabeth Valle, the daughter of the owner of a cheesemonger's warehouse and it is not until the 1911 census that a fortunate mistake in the census records Charles as being born at 'Walnut Tree Walk' rather than recording simply a district such as Lambeth or Southwark thus connecting the family of 1971 with that of 1911

Meantime, John had re-married. Banns for Susan Gordon Theobalds with John William Smith May 11 1890 at Christ Church Trafalgar Rd, Greenwich.  
Apr-June quarter 1890 Royston vol 3a page 630.

In the 1891 census they are at 2 Muir Road, Battersea, Wandsworth, London.

John W Smith	head	married	m	49	Mechanical modeller	Middlesex
Susan Smith	wife	married	f	36		Kent.
Maud C Smith	dau	single	f	17		Surrey

1901 2 Muir Road, Battersea, Wandsworth, London.

John William Smith	head	mar	m	60	Modeller & machinist worker	Stepney
Susan Smith	wife	mar	f	46		Greenwich, Kent.

The couple have not been found in later censuses.

For information about Lambeth in 1877.

<http://www.barbsweb.co.uk/history/lambeth.htm>

<http://www.victorianlondon.org/publications/thomson-5.htm>

The following extract from 'Rockdale: The Growth of an American Village in the Early Industrial Revolution by Anthony F.C. Wallace'. (New edition 2005, page 212.) gives some indication of what John William Smith must have done as a modeller and machinist.

The machinist's practice in the early nineteenth century merged imperceptibly into that of the blacksmith, the ironmaster, the machine maker the engineer, the draughtsman, the inventor, the natural scientist. Established and successful manufacturers and merchants - men of good family - were quite willing to commit their sons as apprentices in machine shops. The trade was an old one and had a sense of community, which encouraged the transmission of technological information by methods of demonstration and practice as well as by the immigration of experienced operatives and the travel of American machinists abroad.

Although some successful mechanics were manufacturers, the culture of the machinist was fundamentally different from that of the manufacturer: the machinist thought with his hands and eyes, and when he wished to learn or communicate he made a drawing or a model, the manufacturer and manager thought with his larynx, as it were and when he wished to learn or communicate, he did so in words, in conversation or writing. The

machinist had dirty hands with working with tools; the manager had cramped hands with writing.

For 1890 and present day maps of Lambeth see:

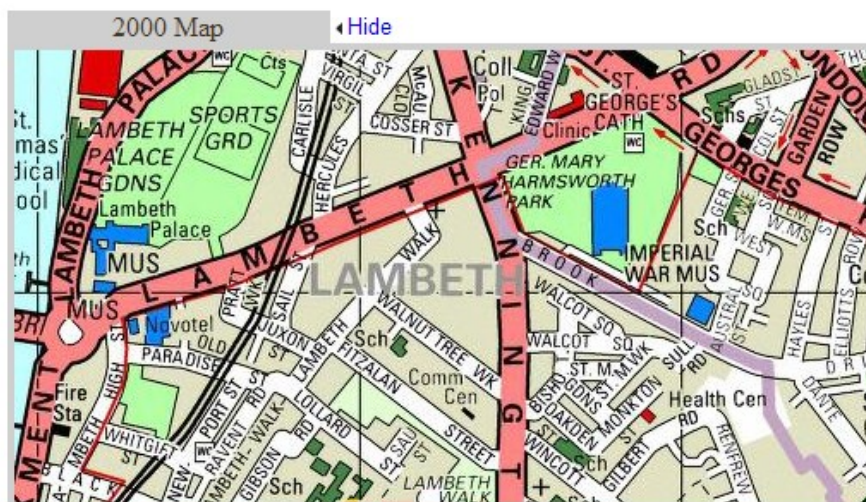
[http://booth.lse.ac.uk/cgi-bin/do.pl?](http://booth.lse.ac.uk/cgi-bin/do.pl?sub=view_booth_and_barth&m.l=1&m.d.l=1&m.p.x=8194&m.p.y=7918&m.p.w=500&m.p.h=309&m.p.l=2&m.p.p.l=3&m.t.w=128&m.t.h=80&b.p.x=13831&b.p.y=10857&b.p.w=500&b.p.h=309&b.p.l=3&m.v.x=272&m.v.y=252)

[sub=view\\_booth\\_and\\_barth&m.l=1&m.d.l=1&m.p.x=8194&m.p.y=7918&m.p.w=500&m.p.h=309&m.p.l=2&m.p.p.l=3&m.t.w=128&m.t.h=80&b.p.x=13831&b.p.y=10857&b.p.w=500&b.p.h=309&b.p.l=3&m.v.x=272&m.v.y=252](http://booth.lse.ac.uk/cgi-bin/do.pl?sub=view_booth_and_barth&m.l=1&m.d.l=1&m.p.x=8194&m.p.y=7918&m.p.w=500&m.p.h=309&m.p.l=2&m.p.p.l=3&m.t.w=128&m.t.h=80&b.p.x=13831&b.p.y=10857&b.p.w=500&b.p.h=309&b.p.l=3&m.v.x=272&m.v.y=252)

Location of Walnut Tree Walk.



▲ Reduce view area



2000 Map

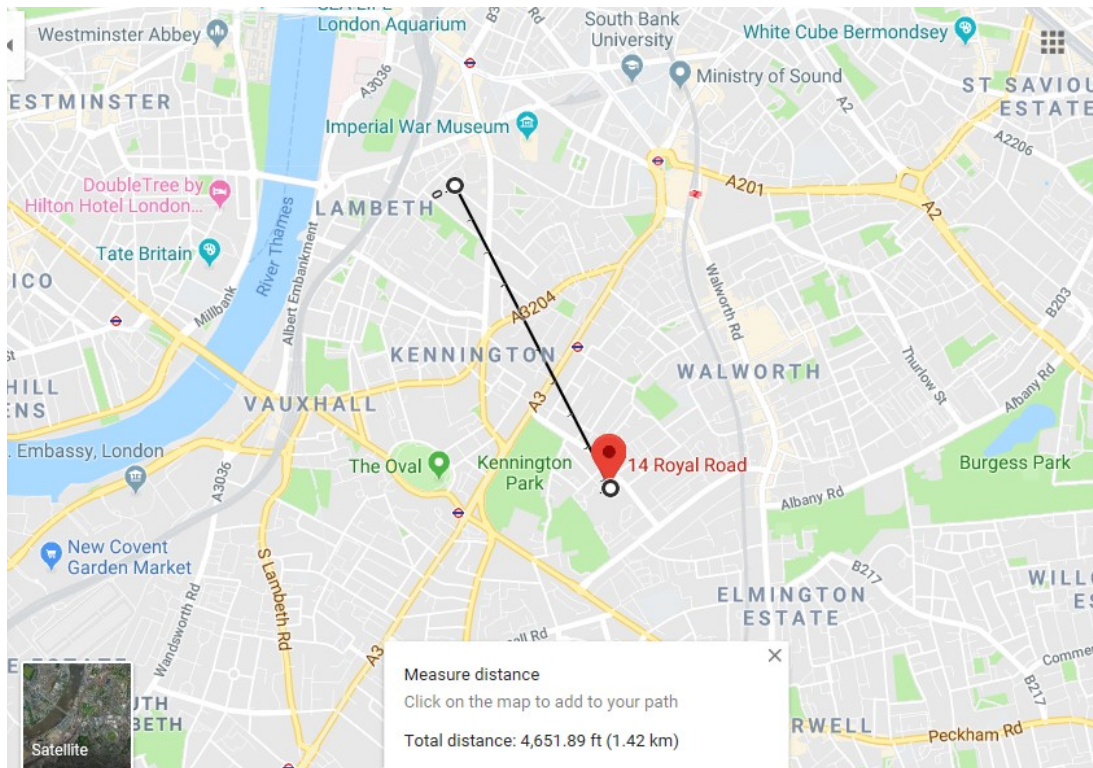
◀ Hide

	<b>BLACK:</b> Lowest class. Vicious, semi-criminal.
	<b>DARK BLUE:</b> Very poor, casual. Chronic want.
	<b>LIGHT BLUE:</b> Poor. 18s. to 21s. a week for a moderate family
	<b>PURPLE:</b> Mixed. Some comfortable others poor
	<b>PINK:</b> Fairly comfortable. Good ordinary earnings.
	<b>RED:</b> Middle class. Well-to-do.
	<b>YELLOW:</b> Upper-middle and Upper classes. Wealthy.

Colours on the Booth map vary from those shown here, mainly due to differences in the background on the original

1881 14 Royal Road, Newington, St Saviour Southwark, London and Surrey

Mary Ann Davis	head	widow	f	60	letting lodgings	City of London
Charles Smith	nurse	child	single	m	3 1878	Lambeth, Surrey, England
Ellen Parsons	lodger	head	m	35	laundress	(W.S.) Lambeth
Louisa Parsons	daughter	single	f	9	scholar	Lambeth
Joseph Pettifer	lodger	wid	m	69	plasterer	Croydon
Frederick Goddard	lodger	single	m	23	bricklayer	Lambeth
William Cucksey	lodger	single	m	31	General labourer	Lambeth



Google map 2019 showing the distance from Walnut Tree Walk to Royal Road.